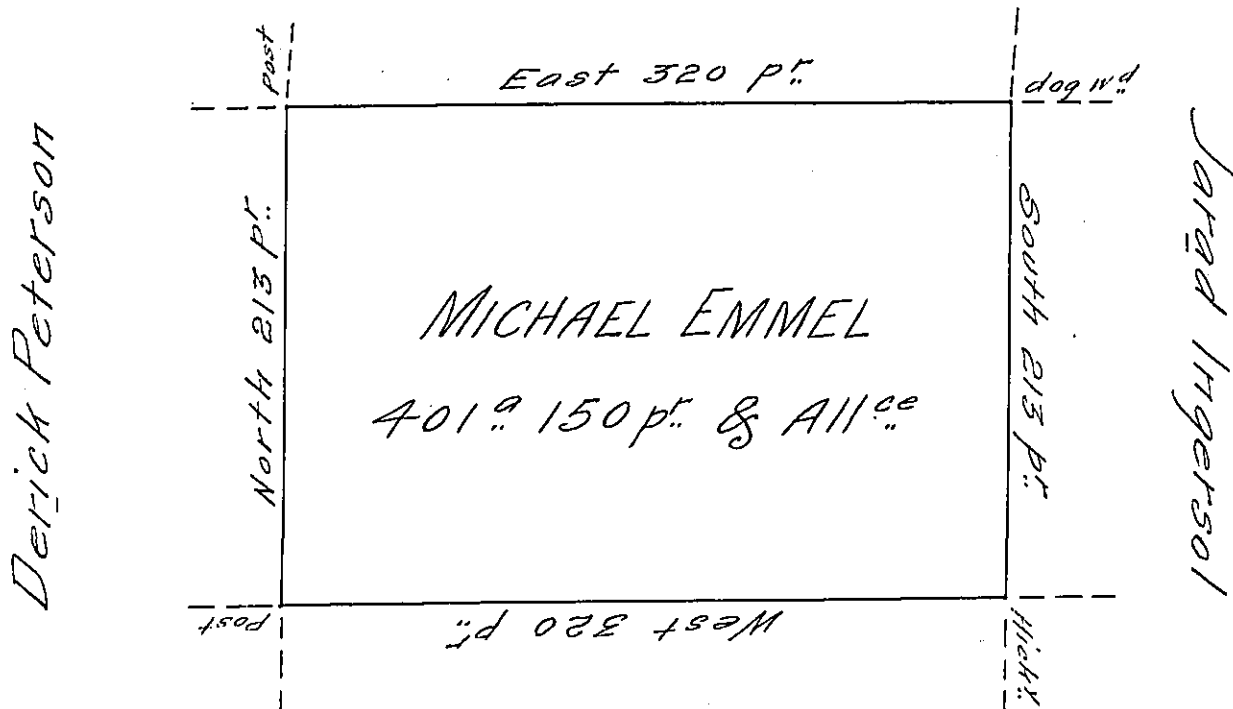


James Hutchison



Mathew Irwin

Situate on the west side of French
Creek in Allegheny County Containing 401
Acres and 150 p^t and allowance of Six $\frac{1}{2}$
Cent for Roads &? Surveyed the 18th day
of October 1794. In pursuance of a warrant
bearing date the 30th day of May 1792

W^m Power D^y Sr.

To Daniel Brodhead Esq^t }
Surveyor General }

IN TESTIMONY that the above is a copy of the original remaining on file in
the Department of Internal Affairs of Pennsylvania, made
conformably to an Act of Assembly approved the 16th day of
February, 1833, I have hereunto set my Hand and caused
the Seal of said Department to be affixed at Harrisburg,
this twenty-seventh day of September 1906

Geo. B. Brown
Secretary of Internal Affairs.